



**Dunn Energy
Cooperative**

A Touchstone Energy Cooperative



By James Hathaway,
General Manager

SOLAR OPTION

I read an article recently that reported that 75 percent of Americans thought that their utility should increase its investment in solar energy production. One of the big reasons was that solar emits no pollution leading to lower health risks than other forms of energy. They also thought that an investment in solar energy creates economic and job growth.

Investment in solar energy creates economic and job growth.

A lot is being said about solar electric facilities these days. Installation costs have come down. Technology has improved production, and more and more people are interested in having some or all of their electric power come from a renewable source. Our power supplier, Dairyland Power Cooperative, has been investing in solar electricity. Dairyland has added close to 25 Megawatts (MW) of solar electric generation in the past few years. And at Dunn Energy Cooperative we offer our members a variety of options with regards to solar energy.

If you are a member of Dunn Energy Cooperative and you are interested in installing a solar array at your home, give us a call. We can explain the steps necessary for connecting your system to our electric grid. We have a number of members who have installed their own solar array at their homes. The cooperative buys any excess electricity generated by member solar arrays.

The price of solar arrays has come down in recent years, but an array large enough to power an entire home still costs quite a bit of money. If you are a member of the co-op and you are interested in solar electricity but you don't want to put in your own solar array, Dunn Energy has other options for you to consider.

As I said, our power supplier, Dairyland Power, has been investing in solar electricity. A couple years ago Dairyland contracted to have a 1 MW solar array built near our Downsville substation. Dunn Energy worked with the

contractor to have an additional 100 kilowatts of solar built. We divided our portion into 400 blocks and we have been selling the blocks to our members.

Members who have bought blocks in the solar array get a credit on their bill each month for the electricity generated by the solar array block. The array has been operational for a bit over a year and a half, and so far the array has produced about 400 kWh per block per year. We still have some blocks for sale.

If you are interested in having some of the electricity you buy come from a renewable source, an investment in our solar array may be for you. While a 10 KW array installed at your home will cost in the neighborhood of \$30,000,

a block in our SunDEC solar array costs much less. At \$600 per 250-watt block, it gives you the opportunity to start small if \$30,000 doesn't fit in your budget. It's a lower cost way of getting some of your electricity from a local renewable source. (4484002)

Dunn Energy has another way of helping members invest in renewable electricity.

Our Evergreen program allows member to make sure that some or all of the electricity they buy comes from a renewable source. How does the Evergreen program work?

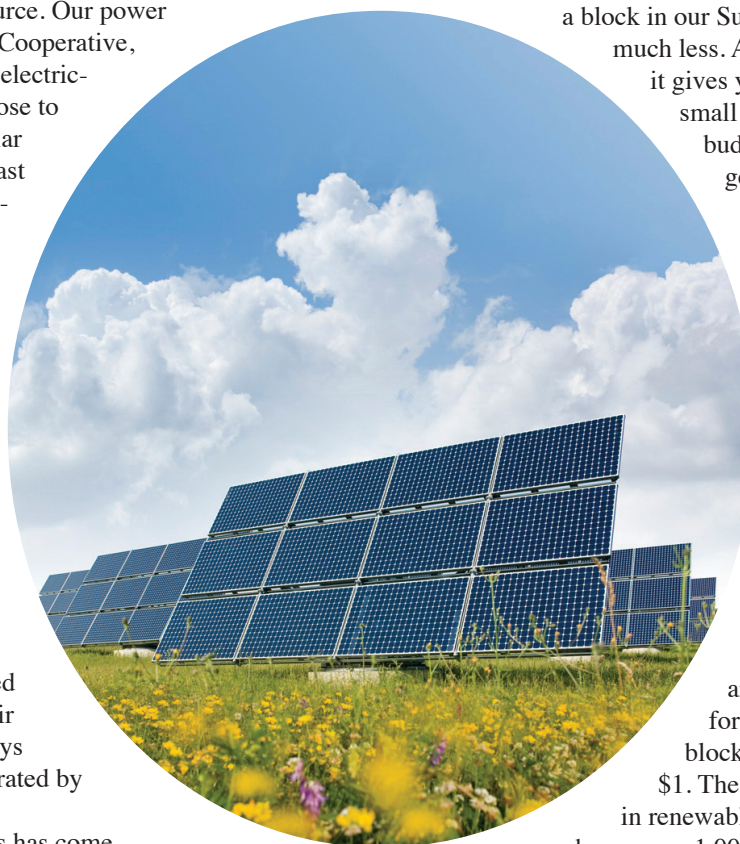
All you have to do is give us a call and tell us that you are interested in signing up for the Evergreen program. A block of 100 kWh costs an extra

\$1. The extra dollar is used to invest in renewable electricity. So if your

home uses 1,000 kWh a month, for an extra

\$10 per month in our Evergreen program, you can guarantee that the electricity you use in your home comes from a renewable source.

So whether you are interested in investing a dollar or two a month in renewable electricity, or going all in, Dunn Energy Cooperative can help you achieve your goal. Just give us a call at the office. Solar electricity is clean and renewable. And Dunn Energy can help with a program that fits your needs.





KEEP WATCH over your space heater

As colder temperatures approach and you reach for your space heater to help you get cozy and warm, make sure you consider the potential dangers of using one. If misused, a space heater can cause electric shock or fire.

When plugging in your space heater, never use an extension cord. Although handy and convenient, an extension cord cannot handle the energy spikes caused by a space heater and may become overloaded, possibly causing a fire. Also make sure the appliance is plugged in properly so there is not a loose connection, and carefully consider where you'll place the heater in your home.

"A portable space heater can add to the quality of your indoor living but its misuse has potentially dangerous outcomes and using it properly should be an absolute priority," says Molly Hall, Energy Education Council executive director.

Safe Electricity offers additional tips to keep you and your family safe while using portable space heaters:

- Place heater in open areas and keep it at least 3 feet away from anything that can burn, such as paper or rugs. Also, do not place it near combustibles in your home such as paint, varnish, harsh cleaners, aerosol sprays, or nail polish remover.
- Monitor space heaters when they are in use.
- Do not use them in potentially wet areas, such as kitchens or bathrooms.
- Do not use space heaters around small children.
- Keep space heaters away from pathways or doors in your home, and make sure the cord is not a tripping hazard.
- Do not use open-coil space heaters.
- Do not use a heater in disrepair or with a frayed cord or damaged plug.
- Do not plug any other electrical devices into the same outlet as the space heater.
- Before using your heater, read all manufacturer's instructions and warning labels.
- Place them on flat, level surfaces and never place on furniture, counters, or carpet, which can overheat.
- Select a space heater that is endorsed by a recognized testing laboratory.
- Space heaters are for supplemental heat only; they should never be used for another purpose (thawing pipes or drying clothes, for example).
- When not in use, unplug the heater and put it away.

A space heater can help keep you warm, but be sure to use it with care so that you'll stay safe in the colder months. For additional safety tips, visit SafeElectricity.org.



We are thankful for your membership!

“Feeling gratitude and not expressing it is like wrapping a present and not giving it.”

In the spirit of this quote by author William Arthur Ward, we’d like to take this opportunity to express our gratitude for your membership in our electric cooperative. Because of your connection to Dunn Energy Cooperative, we are able to make our community a better place.

We generally use this space to provide updates on new projects and developments, and report on the progress of ongoing initiatives. We share these updates so that all of our consumer-members have a window into our priorities, progress, and challenges. However, during this season of giving thanks, I think it’s equally important to let you and other consumer-members of Dunn Energy know just what an impact you have on our co-op and the greater community, likely in ways you may not even realize.

As part of the cooperative business model, one of our core principles is “Concern for Community.” While our priority is always to provide safe, reliable, and affordable energy, we view our role in the community as a catalyst for good. (1253007)

We are purposeful in partnering with local groups such as Stepping Stones Food Pantry for food drives and other programs.

We work closely with our local schools to provide safety demonstrations, award college scholarships, and help fund projects and classrooms through Operation Round Up. Dunn Energy also participates in an annual Youth Leadership Congress where we take our community’s brightest young people to UW-River Falls for a three-day conference on leadership and the cooperative way. Ultimately, the larger community benefits from these programs because of you! You empower the co-op through your membership and

through your participation in and support of these programs.

When you attend co-op events, alert us to problems, provide suggestions online or to our employees, you help us improve operations and thereby better serve the larger co-op membership.

Because we are locally governed by members of our community, we are able to get a firsthand perspective on community priorities, thereby enabling us to make more informed decisions on long-term investments, such as community solar programs, equipment and technology upgrades, and electric vehicle programs.

**Together, let’s
continue making
our corner of
the world a
better place.**

We are thankful that our co-op board members carve out time to attend important training sessions, participate in planning meetings, and keep abreast of industry trends. This investment in time results in better informed advisors

who serve the co-op’s interests in a way that our consumer-members expect and deserve.

On a more personal note, we appreciate the countless acts of kindness our lineworkers and other employees receive when they are working in severe weather and dangerous conditions. Our employees are thankful for your patience and consideration when we are trying to restore power during challenging situations and prolonged periods.

Dunn Energy Cooperative was originally established over 80 years ago to bring electricity to our area when no one else would. The cooperative is a reflection of our local community and its evolving needs. Together, let’s continue making our corner of the world a better place. We can’t do it without you, and for that, we’re thankful for your membership.



Together we can make a difference for the next generation, like Kittrick here. When we first met him 10 years ago, with our first Energy Sense campaign, electric car charging stations in homes weren't on our list of rebates because they were just coming on the scene. Now, they're everywhere and we support that! Did you know that we have a \$100 rebate on hard-wired EV Charging Stations?

For more information on this or any of our other rebates visit www.dunnenergy.com or give us a call at 715-232-6240.

Energy Sense
Together we can...

LOAD MANAGEMENT TEST SET FOR NOVEMBER 14

Please be advised the Winter Test for Interruptible Heat (Dual Fuel) Members is scheduled for Wednesday, November 14. This date is the Wednesday of the week before Thanksgiving, the same test day as prior years.

Residential Interruptible Heat load classes will be controlled as follows:

Control Start

All Interruptible Heat load classes will begin control at 5 p.m. without pre-alert.

Restoral

Miscellaneous Heat loads (class 4B) will be restored at 8:30 p.m. All other Interruptible Heat loads (classes 2A, 2B, 2C and 2W) will vary in restoral, beginning at 9 p.m., with all loads restored by 10 p.m.

\$\$ FOR HIDDEN ACCOUNT NUMBERS

If your account number is one of the two hidden account numbers in this issue, it will mean \$10 credit on your account if you call the office before the end of the month. Two customer account numbers have been randomly selected and are hidden in the Dunn Energy Cooperative section of this *Wisconsin Energy Cooperative News*. Last month's winners were Thomas J. Olson and Duane Elbe.

James Hathaway, Manager

N5725 600th St., P.O. Box 220, Menomonie, WI 54751
715-232-6240

www.dunnenergy.com

Jolene Neisius, Editor



**Dunn Energy
Cooperative**

A Touchstone Energy® Cooperative